



LITTLE CHUTE

Area School District

fostering a community of learners

ALICE Crisis Response Framework

Student Training Presentation

Learning Targets

- To assess what we already know about school emergency procedures
- To understand the central concepts of the ALICE framework
- To practice ALICE strategies

Survivability over accountability

History of ALICE

Lockdown: designed for threats outside of the school (e.g. drive by shootings)

- Not effective for intruder in the building
- Defenseless target trapped in a room
- Does not allow for decision making

ALICE promotes decision making to increase survivability

What is ALICE?

ALICE is a research-based, proactive approach to responding to an active shooter situation which authorizes and empowers those engaged in such an event to utilize existing building infrastructure, technology, and human action to increase the chance of survival.

Possible Response Scenarios

Hold

Secure

ALICE

Hold-Situation in the Building

What does a HOLD drill look like?

- Students in the hallway will report to their classroom or nearest classroom.
 - If students need to be transported anywhere, they must be escorted.
 - Teachers will lock their classroom door and continue teaching.
 - Teachers will get more information through their email.
 - Wait for the HOLD to be lifted prior to resuming normal routines.
-

Secure-Threat Outside Building

What does a **SECURE** look like?

- At this time, there will be no traffic allowed in the hallways.
 - Students, if you are in passing time, proceed to your next class/students if you are in the hallway, return to your classroom immediately.
-

Secure

What does a secure look like?

- All students and staff should remain in place (if applicable, announce below as well)
 - Doors should be closed and locked
 - Lights turned off
 - Move away from doors and windows
 - Teachers, please continue to teach
 - This secure status is in effect until you hear an announcement stating the status has been lifted.
-

Secure v. Hold

Describe situations for each scenario.

Why are they different?

Turn and talk - 3 minutes

A photograph of a hallway with a person's silhouette in the distance. A teal semi-transparent box is overlaid on the left side of the image, containing the acronym A.L.I.C.E. and its components. The hallway has a polished floor reflecting the overhead lights.

A.L.I.C.E.

ALERT
LOCKDOWN
INFORM
COUNTER
EVACUATE

ALICE

Alert

Lockdown

Inform

Counter

Evacuate



Alert
Lockdown
Inform
Counter
Evacuate

The ALICE Framework

- Alice is not a complete procedure, it is a set of general recommendations that has to be fit to each building and grade level.
 - Alice is not linear or sequential. The action related to each letter in ALICE is not always followed in that order. Example ALI, or AIE, or ALC.....
-

When faced with Danger.....

We have 3 natural responses.

1. FIGHT: Counter Strategies
 2. FLIGHT: Evacuate
 3. FREEZE: Secure-in-place
-

Who is the Active Killer?

1. There is NO accurate or useful profile of students who engage in targeted school violence
2. Despite prompt law enforcement response, most acts of targeted violence were stopped by means other than law enforcement intervention-

5-6 minutes

Alert-see something, say something

- Good information is the key to good decisions being made
 - Provide as much initial information to as many people as possible
 - Use plain language- no code yellow - hold
 - Texts, PA, Digital, School Messenger, Other
-

Alert-Example

PA Announcement- “Attention, there is a threatening person with a weapon in the building wearing a red polo shirt and is headed toward the cafeteria. ”

How would you respond? Turn and talk - 3 min

Lockdown



- Excellent starting point
- **Barricade**: The idea is to create a stronghold that nobody can breach...**Be a harder target.**
- Once Lockdown is in effect no one should be allowed into a secure room under any circumstances.
- What in the room is useful? Turn and talk

Inform

- Provide as much real-time information as possible
- Use information to make single or collective decisions
- Use information to exercise the best options available
- Who do you inform?

Counter

- Simple proactive techniques to interfere with and interrupt the actions of the Active Shooter/Intruder
 - Know how to be a harder target
 - Counter is about “doing something”
 - Disrupt the shooter’s OODA loop
-



(c) 2010 Daniel J. Simons

OODA Loop

Simple OODA Loop PowerPoint for Command and Control Process



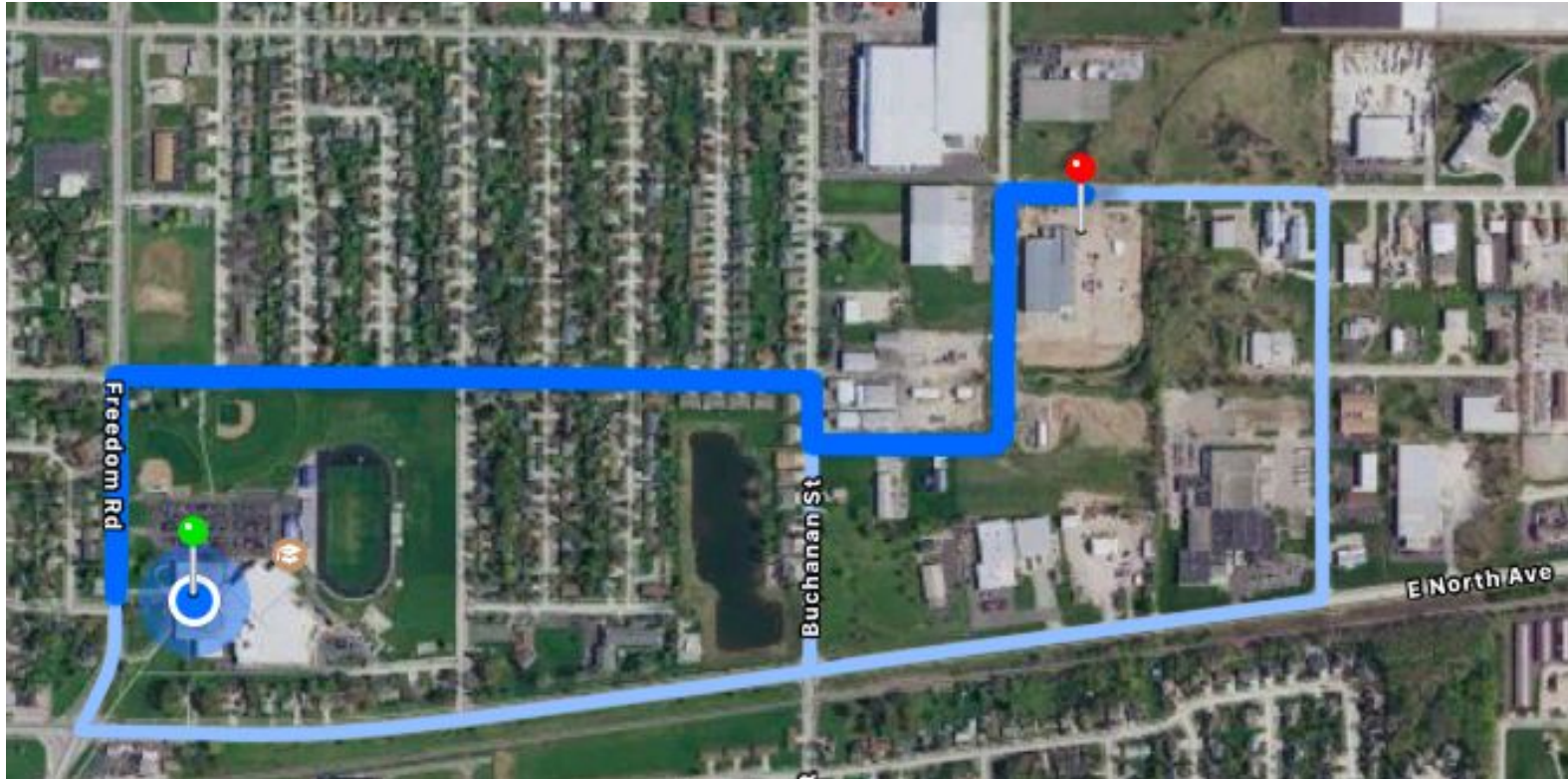
Counter-Examples

- Active resistance may be necessary when evacuation is not possible
 - Create distraction and move toward an exit.
 - Noise, Movement, Distance
 - Active resistance is fighting back with any objects of opportunity, such as chairs, desk, and books.
 - Questions?
-

Evacuate

- The best option if possible
 - Getting away from danger
 - Each school has established rally points and reunification sites.
 - Rally point: when evacuating, go here
 - Reunification: bused to this location from Rally Point
-

Rally Point-Move here if evacuating



Questions?

Please use this link to post [questions](#) about the ALICE protocol.

What can you, as a student, do to make our school safer?
