



LITTLE CHUTE

Area School District

fostering a community of learners

ALICE Crisis Response Framework

Student Training Presentation

Learning Targets

- To assess what we already know about school emergency procedures
 - To understand the central concepts of the ALICE framework
-

Possible Response Scenarios

Hold

Secure

ALICE

Hold-Situation in the Building

What does a HOLD drill look like?

- Students in the hallway will report to their classroom or nearest classroom.
 - If students need to be transported anywhere, they must be escorted.
 - Teachers will lock their classroom door and continue teaching.
 - Teachers will get more information through their email.
 - Wait for the HOLD to be lifted prior to resuming normal routines.
-

Secure-Threat Outside Building

What does a **SECURE** look like?

- At this time, there will be no traffic allowed in the hallways.
 - Students, if you are in passing time, proceed to your next class/students if you are in the hallway, return to your classroom immediately.
-

Secure

What does a secure look like?

- All students and staff should remain in place
 - Doors should be closed and locked
 - Lights turned off
 - Move away from doors and windows
 - Teachers, please continue to teach
 - This secure status is in effect until you hear an announcement stating the status has been lifted.
-

Secure v. Hold

Describe situations for each scenario.

Why are they different?

Turn and talk - 2 minutes

What is ALICE?

ALICE is a research-based, proactive approach to responding to an active shooter situation which authorizes and empowers those engaged in such an event to utilize existing building infrastructure, technology, and human action to increase the chance of survival.

ALICE promotes decision making to increase survivability.

ALICE

Alert

Lockdown

Inform

Counter

Evacuate

ALERT

Initial Alert may be a gunshot, PA announcement, etc...
Avoid code words.

LOCKDOWN

If Evacuation is not a safe option, barricade entry points.
Prepare to Evacuate or Counter if needed.

INFORM

Communicate real time information on shooter location.
Use clear and direct language using any communication means possible.

COUNTER

As a last resort, distract shooters ability to shoot accurately.
Move toward exits while making noise, throwing objects,
or adults swarm shooter.

EVACUATE

Run from danger when safe to do so using non-traditional exits if necessary. Rallying point should be predetermined.

The ALICE Framework

- Alice is not a complete procedure, it is a set of general recommendations that has to be fit to each building and grade level.
 - Alice is not linear or sequential. The action related to each letter in ALICE is not always followed in that order. Example ALI, or AIE, or ALC.....
-

When faced with Danger.....

We have 3 natural responses.

1. FIGHT: Counter Strategies
 2. FLIGHT: Evacuate
 3. FREEZE: Secure-in-place
-

Alert-see something, say something

- Good information is the key to good decisions being made
 - Provide as much initial information to as many people as possible
 - Use plain language
 - Texts, PA, Digital, School Messenger, Other
-

Alert-Example

PA Announcement- “Attention, there is a threatening person with a weapon in the building wearing a red polo shirt and is headed toward the cafeteria. ”

How would you respond? Turn and talk - 1 min

Lockdown



- Excellent starting point
- **Barricade**: The idea is to create a stronghold that nobody can breach...**Be a harder target.**
- Once Lockdown is in effect no one should be allowed into a secure room under any circumstances.
- What in the room is useful? Turn and talk

Inform

- Provide as much real-time information as possible
- Use information to make single or collective decisions
- Use information to exercise the best options available
- Who do you inform?

Counter

- Simple proactive techniques to interfere with and interrupt the actions of the Active Shooter/Intruder
 - Know how to be a harder target
 - Counter is about “doing something”
 - Disrupt the shooter’s OODA loop
-

OODA Loop

Simple OODA Loop PowerPoint for Command and Control Process





(c) 2010 Daniel J. Simons

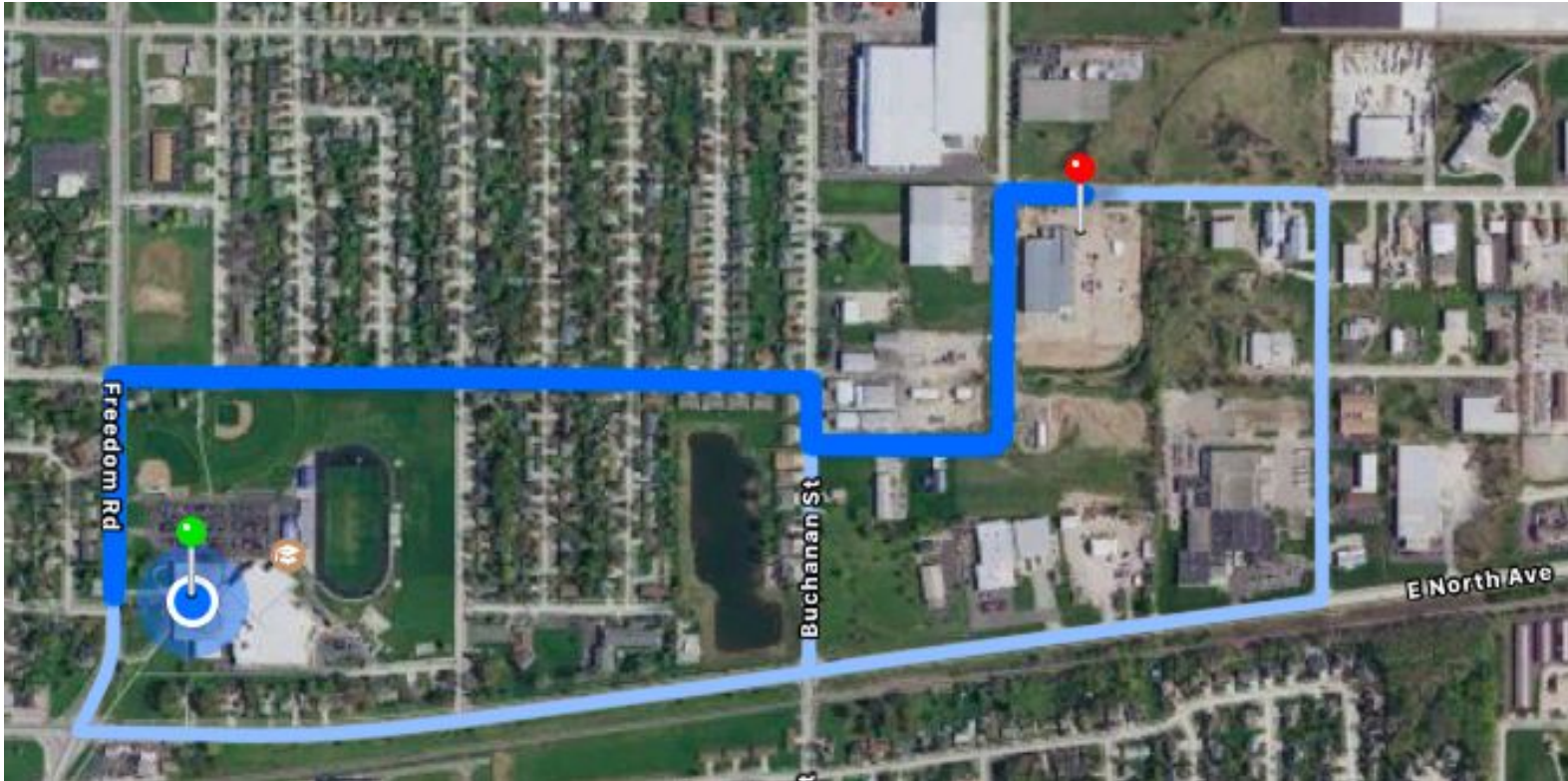
Counter-Examples

- Active resistance may be necessary when evacuation is not possible
 - Create distraction and move toward an exit.
 - Noise, Movement, Distance
 - Active resistance is fighting back with any objects of opportunity, such as chairs, desk, and books.
 - Questions?
-

Evacuate

- The best option if possible
 - Getting away from danger
 - Each school has established rally points and reunification sites.
 - Rally point: when evacuating, go here
 - Reunification: bused to this location from Rally Point
-

Rally Point-Move here if evacuating: Village Municipal Services Building



LCASD Crisis Plan

- No Code Words- ~~Red/Yellow/Green~~
 - Hold
 - Used when hallways or common areas need to be free of students for medical or administrative reasons
 - Keep students in classroom, continue teaching, check email if instructed
 - Secure
 - Outside situation, lock classrooms, continue teaching, movement dictated by office, any available teachers/staff report to office for assistance
 - Initiate ALICE
 - Do not panic
-

Questions?

What can you, as a student, do to make our school safer?
